



# Samples Specifications

**Model No:** EA-1012HB3CN  
EA-1012KW1CN

**Spec No:**

## Descriptions

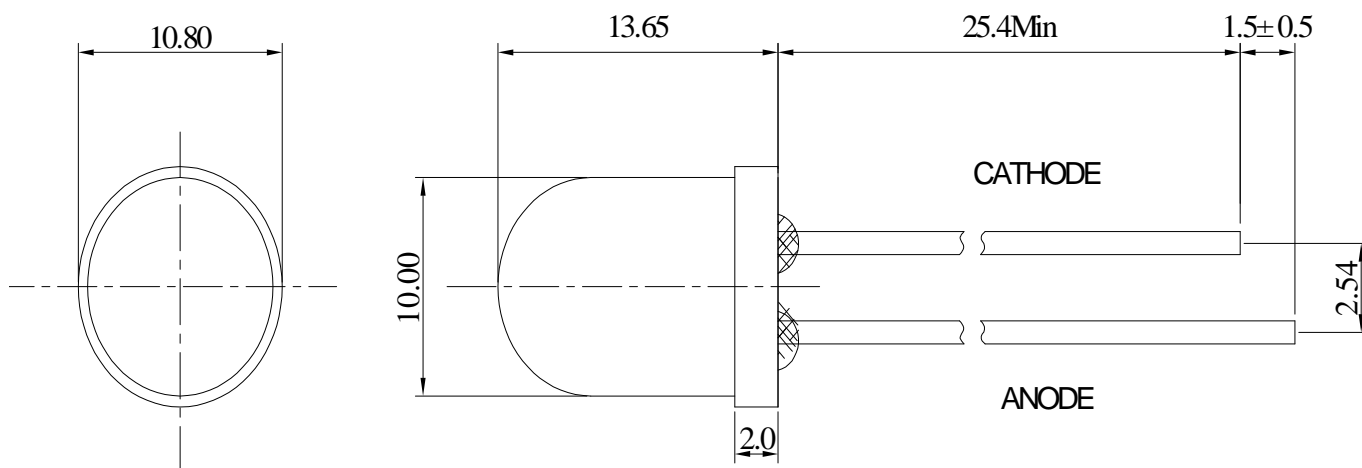
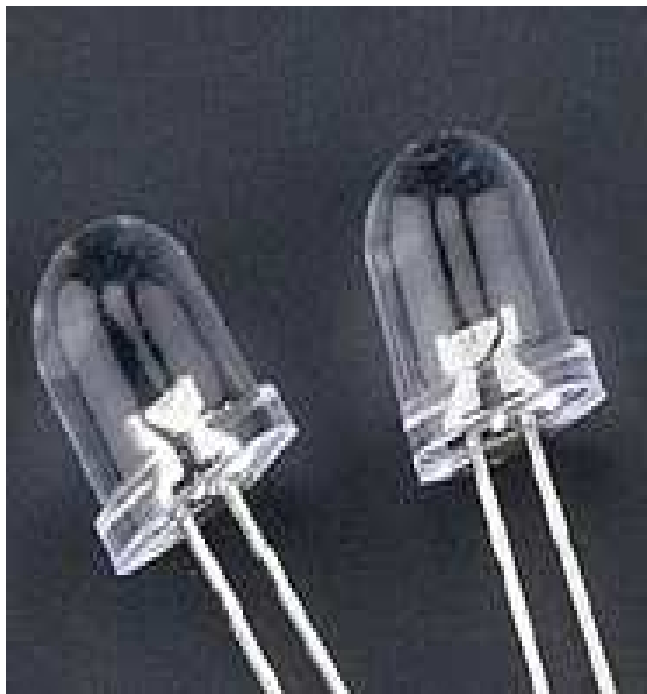
- 10mm Round With Flange Type
- Emitting Color:BLUE AND WHITE
- Viewing Angle:15-20
- Lens: Water Clear

Client Signature			Company Signature		
Approved	Acceptance	Stamp	sales	Approved	Creation





## Package Dimension:



Unit:mm Tolerance:± 0.2mm



## Notes:

1. All dimensions in mm tolerance is  $\pm 0.2\text{mm}$  unless otherwise noted
2. An epoxy meniscus may extend about 1.5-2.0mm down the leads
3. Burr around bottom of epoxy may be 0.5mm max.
4. Specifications are subject to change without notice

## Absolute Maximum Ratings at $T_a=25$

Parameter	Symbol	Absolute maximum Rating	Unit
Continuous Forward Current	$I_F$	30	mA
Peak Forward Current (1/10 Duty Cycle, 0.1ms Pulse Width)	$I_{FP}$	80-100	mA
Reverse Voltage	$V_R$	5	V
Power Dissipation	PD	80-100	mW
Operating Temperature Range	$T_{opr}$	-30 to +85	$^{\circ}\text{C}$
Storage Temperature Range	$T_{stg}$	-40 to +100	$^{\circ}\text{C}$
Lead Soldering Temperature [3mm From Body]	$T_{sld}$	260 $^{\circ}\text{C}$ for 5Seconds	

## Electrical Optical Characteristics at $T_a=25$

Parameter	Symbol	Test Condition	Min.	Type.	Max.	Unit
Reverse Current	$I_R$	$V_R = 5\text{V}$	---	---	10	$\mu\text{A}$



## Flux Characteristics at 20mA, Ta=25°C

Part No	$\lambda$ D(nm) /CCT	Grade	Color	Luminance (mcd)			Forward Voltage (V)		Viewing Angle
				Min	Typ	Max	Min	Max	
EA-1012HB3CN	5500-6400	W	WHITE	20000		40000	3.0	3.4	15

EA-1012KW1CN	455-460	B	BLUE	20000		40000	3.0	3.4	15
--------------	---------	---	------	-------	--	-------	-----	-----	----

### Notes:

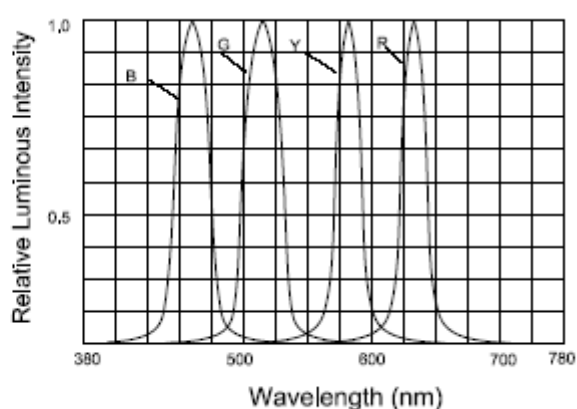
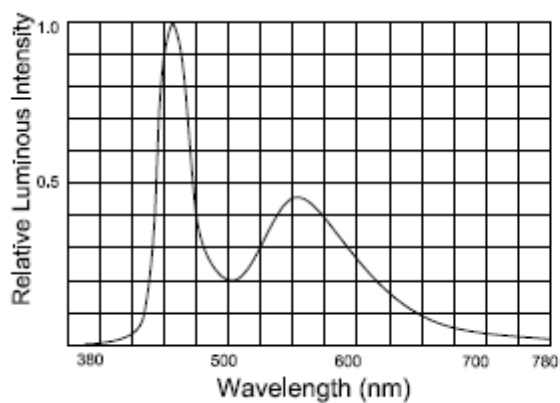
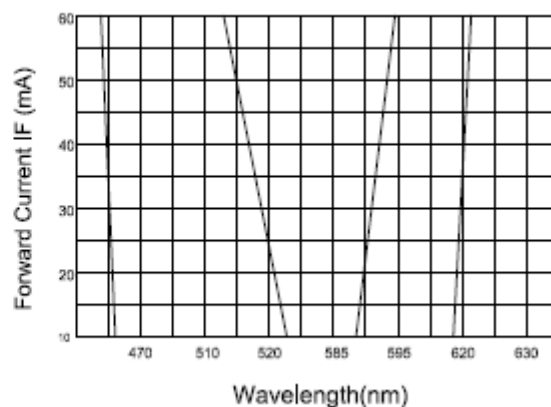
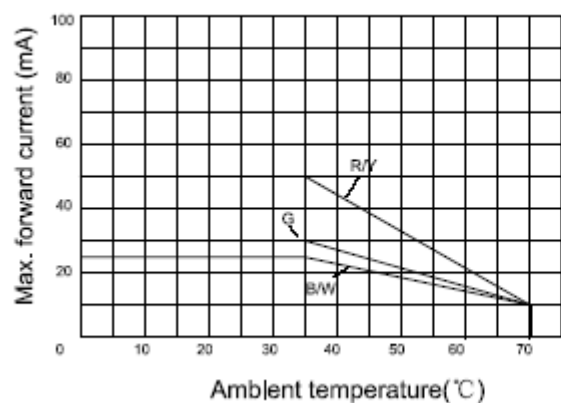
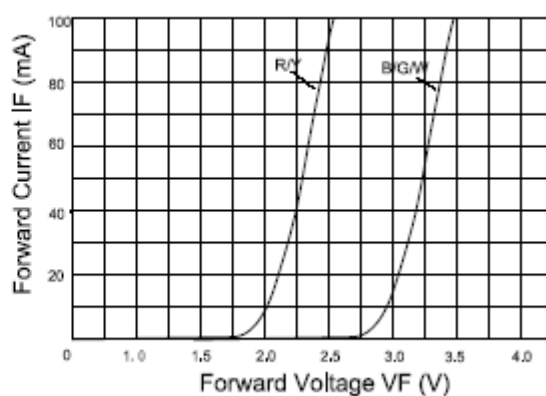
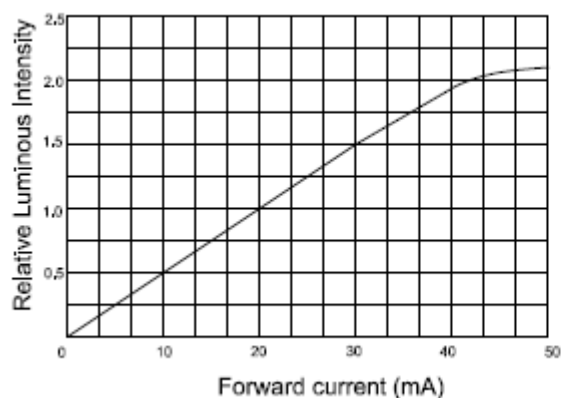
- 1) Tolerance of measurement of forward voltage is  $\pm 0.05$  V.
- 2) Tolerance of measurement of luminous intensity is  $\pm 15\%$ .
- 3) Tolerance of measurement of CCT  $\pm 5\%$

## Typical Electrical /Optical Characteristics Curves

(25°C Ambient Temperature Unless\_ Otherwise Noted)



# E+A LED's



**Jointing explanation**

**lead-free solder**



mode	fixed form
Hand soldering	1. Soldering time : 3 sec MAX. 2. Distance : 3 mm MIN (from solder joint to case)
DIP soldering	1. Preheat temp : 100 °C MAX , 60 sec MAX. 2. Bath temp : 265 °C MAX. 3. Bath time : 5 sec MAX. 4. Distance : 3 mm MIN (From solder joint to case) 5. decrease temperature externally and compulsorily after dip soldering)
Reflow	NO

## Lamp wave soldering profile :

